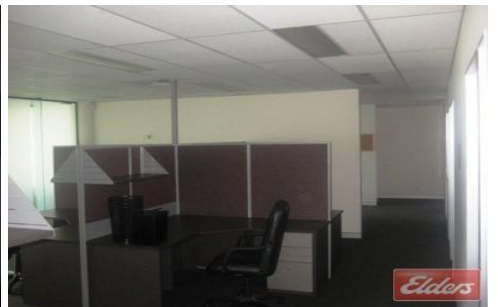
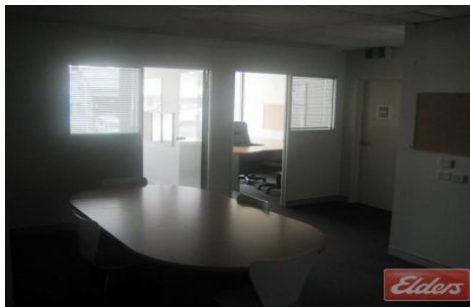




Commercial



FORTITUDE VALLEY

Situated in vibrant Fortitude valley just off St Paul's Terrace, with easy and direct access to the CBD and public transport hubs. This office space has the following features;

- 5 Separate offices
- Ample open space office
- Security alarmed
- Kitchenette/Bathroom
- Meeting room

For more information or to arrange an inspection please contact Elders Commercial today!

Type : Offices
Building Size : 185 sqm
View : <https://www.elderscommercialbrisbane.net.au/3223059>



Clinton Mallan
(07) 3252 4999