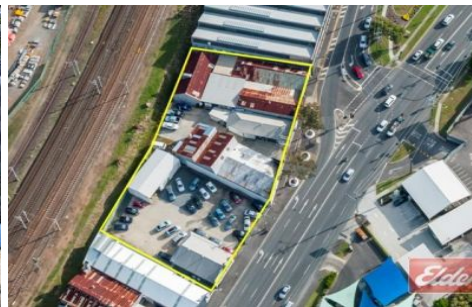
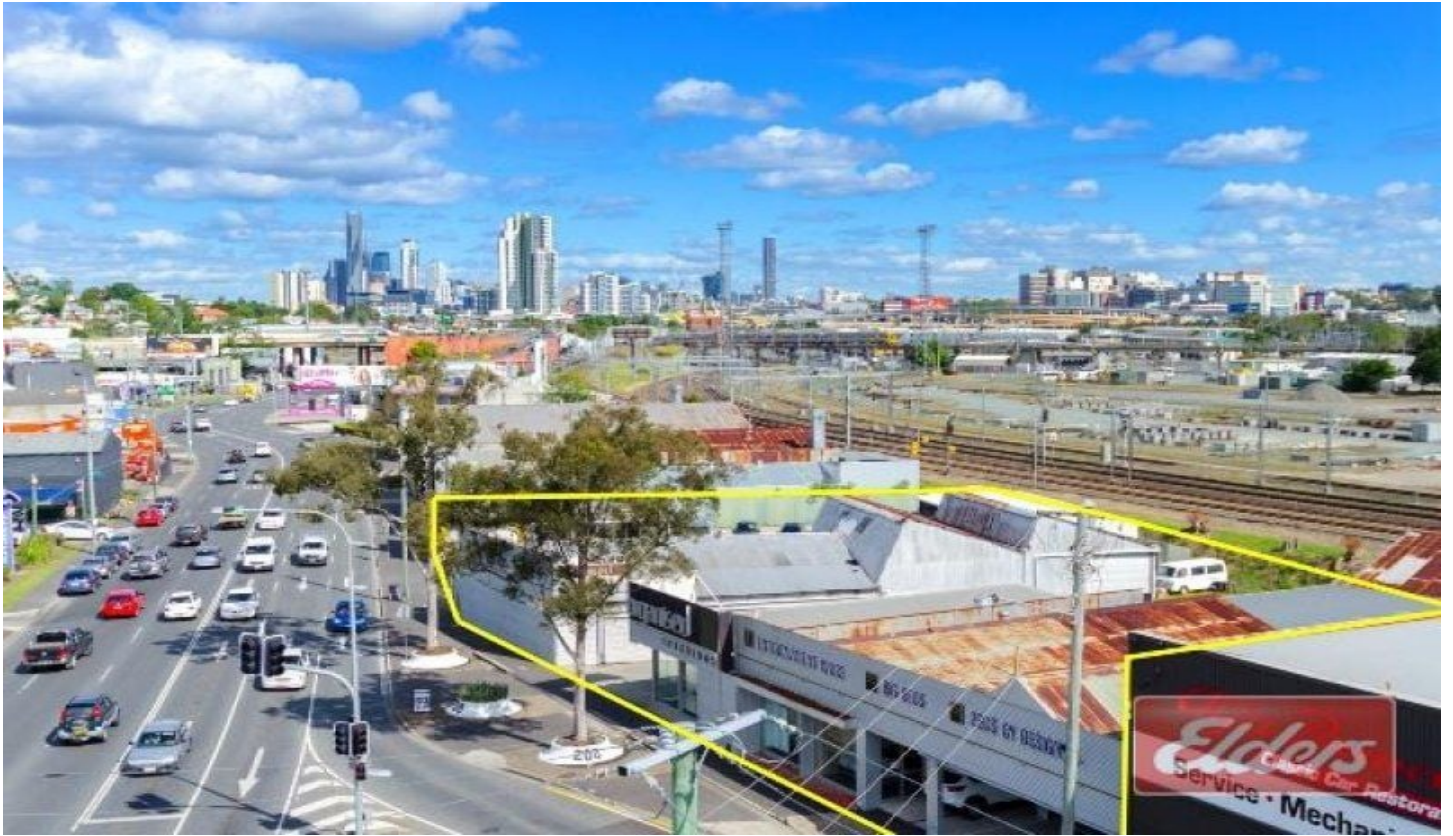




Commercial



192, 196, 200 Abbotsford Road BOWEN HILLS QLD

AVAILABLE INDIVIDUALLY OR AS A WHOLE!

Elders Commercial is pleased to present to the market a commanding Bowen Hills holding for sale by negotiation!

Rarely offered to the market, the opportunity exists for Owner Occupiers, Investors and Developers to secure this well exposed holding positioned in the near city urban renewal precinct of Bowen Hills.

- Portfolio of 3 properties is positioned over an expansive 2,970m²* land parcel consisting of 6 individual lots

- Building improvements of 1,474m²* spread over 3 separate buildings comprising a mix of warehouse,

| | |
|----------------------|---|
| Type | : Showrooms/Bulky Goods |
| Price | : \$ 4,100,000 |
| Building Size | : 1493 sqm |
| View | : https://www.elderscommercialbrisbane.net.au/3223219 |



Clinton Mallan
(07) 3252 4999

[For full version visit the website](https://www.elderscommercialbrisbane.net.au)

<https://www.elderscommercialbrisbane.net.au>

(07) 3252 4999