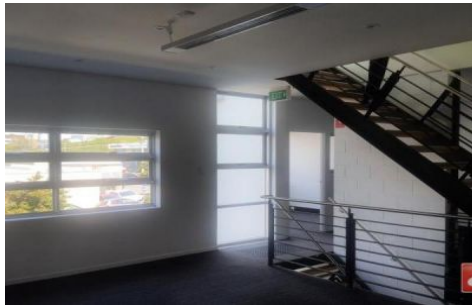
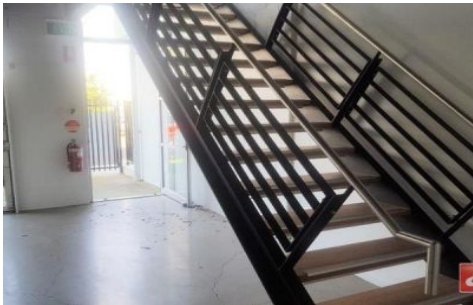




Commercial



15 Thompson Street BOWEN HILLS QLD

Architecturally designed office space with usable courtyard area. Key features include:

- Unique office space split over the ground and first floors
- Largely open plan plus office/meeting room
- Own amenities incl. shower
- Access to own rooftop terrace and courtyard
- On site parking for 1, potential for more close by

Well located within close proximity to major arterials, Bowen Hills Train station and Merlo HQ. For more information or to arrange an inspection, contact Elders Commercial Brisbane today!

Type : Offices
Building Size : 118 sqm
View : <https://www.elderscommercialbrisbane.net.au/3223992>



Clinton Mallan
(07) 3252 4999