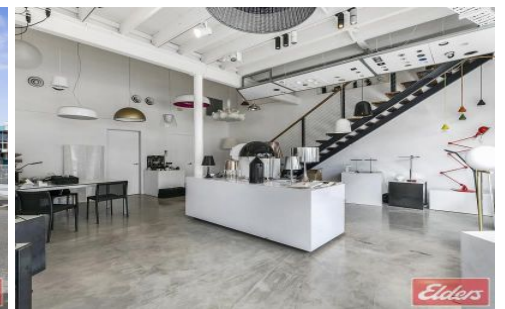
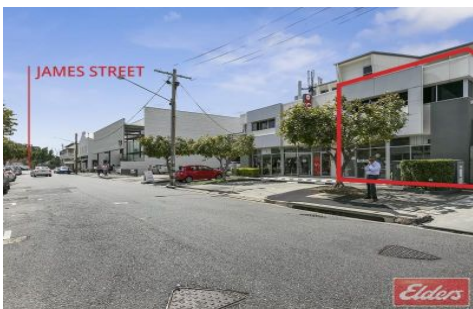




Commercial



FORTITUDE VALLEY



A chance to situate your business in the tightly held designer hub of James Street Precinct, this property offers high ceilings with exposed timber and polished concrete floors. Key features include:

- 109sqm tenancy over two levels
- Suitable for office, showroom or retail type businesses
- 2 On site car parks
- Small kitchenette, back of house storage and toilet
- Professional appearance with character features
- Great natural light
- 50m walk to James Street precinct

THIS PROPERTY WOULD SUIT A VARIETY OF RETAILERS, SHOWROOM USERS AND HIGH END

Type : Offices
Building Size : 109 sqm
View : <https://www.elderscommercialbrisbane.net.au/3934964>



Clinton Mallan
(07) 3252 4999



Matt O'Brien
(07) 3252 4999

[For full version visit the website](https://www.elderscommercialbrisbane.net.au)