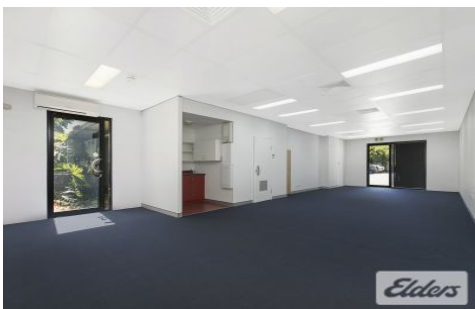




Commercial



Ground/6/76 Doggett Street NEWSTEAD QLD

1 🚗

- Ground Floor approx 87m2 Tenancy
- 1 Onsite Car Park Included + ample visitor
- Newstead Commercial Village Location
- Central Location Close to Cafes and Public Transport

Type : Offices
Building Size : 87 sqm
View : <https://www.elderscommercialbrisbane.net.au/4117583>

This approx 87m2 Ground Floor tenancy is predominantly open plan in layout and allows for an abundance of natural light. The property is suited to a variety of users and has been priced competitively to meet the market. It has brand new carpet and fresh painted walls.

For further information or to arrange an inspection contact your EXCLUSIVE ELDERS agents!



Matt O'Brien
(07) 3252 4999



Clinton Mallan
(07) 3252 4999