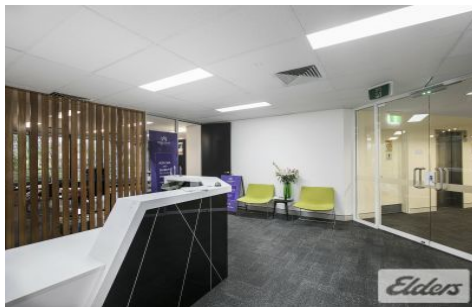




# Commercial



## Suite North/527 Gregory Terrace FORTITUDE VALLEY QLD

Elders commercial Brisbane are pleased to present to the market for lease Part Level 2 at 527 Gregory Terrace Fortitude Valley. The property is one of the best sub-lease spaces around with a brand new fit out in place.

- Approx 376m2 fully fitted out turn key office
- Exceptional natural light throughout
- Secure onsite car parking available
- Walk to Fortitude Valley Train Station

Situated on the corner of Gregory Terrace and Brunswick Street, this modern office tenancy is fully fitted out with reception, meeting room, boardroom, 3 offices and open plan work area with 30 workstations. The tenancy is lift

**Type** : Offices  
**Building Size** : 376 sqm  
**View** : <https://www.elderscommercialbrisbane.net.au/4198107>



**Matt O'Brien**  
(07) 3252 4999



**Clinton Mallan**  
(07) 3252 4999

[For full version visit the website](https://www.elderscommercialbrisbane.net.au)

<https://www.elderscommercialbrisbane.net.au>

(07) 3252 4999