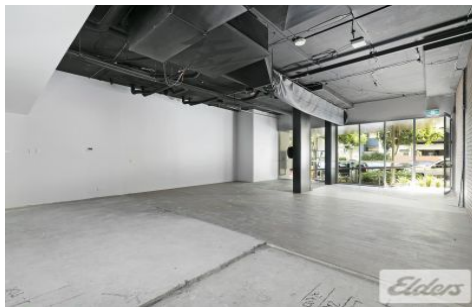




Commercial



113 Commercial Road NEWSTEAD QLD

A great retail opportunity has presented itself on the ground floor of the DoubleOne 3 development, placing prospective tenants in an ever-expanding residential precinct with 111 apartments directly above.

Type : Retail
Building Size : 91 sqm
View : <https://www.elderscommercialbrisbane.net.au/4451108>

Key features of the property include:

- 91m2 retail/showroom
- 9 metres* of Commercial Road frontage
- Great Ceiling Height w/exposed brick work
- Good tenancy mix (café, chocolatier and waxing & tanning salon)
- Access to grease trap and exhaust
- Excellent Signage and Exposure
- Onsite visitor car parks



Luis Nicolaou
(07) 3252 4999



Clinton Mallan
(07) 3252 4999

[For full version visit the website](https://www.elderscommercialbrisbane.net.au)

<https://www.elderscommercialbrisbane.net.au>

(07) 3252 4999