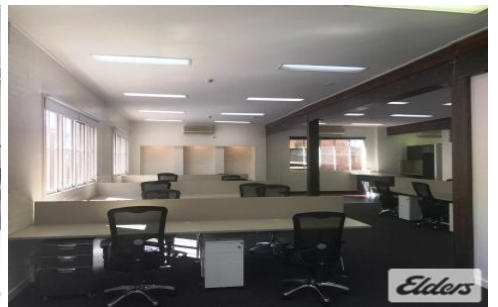
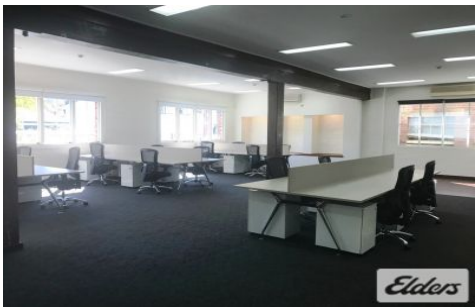




Commercial



FORTITUDE VALLEY

The historic 'Plumridge House' is a beautifully appointed building, just minutes from the Fortitude Valley Train Station. The structure is known to be a highly sought after tenancy for its internal character that radiates style and charm with polished timber floors, exposed steel beams and high ceilings, which form an orthodox design with a unique eminence. Its desirable architecture and location cater for a variety of tenancies across the commercial office market.

Being a tenant of the building you have access to these added bonus:

- Secure building patrolled nightly with back to base alarms
- Onsite manager and maintenance
- Perfect location for public transport users

[For full version visit the website](https://www.elderscommercialbrisbane.net.au)

Type : Offices
Building Size : 123 sqm
View : <https://www.elderscommercialbrisbane.net.au/4818984>



Clinton Mallan
(07) 3252 4999