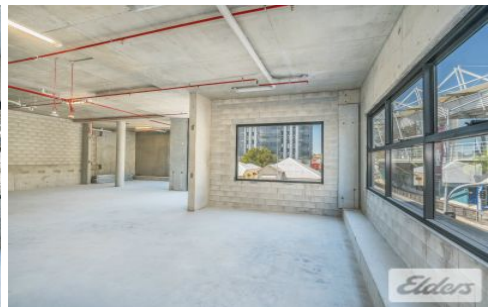
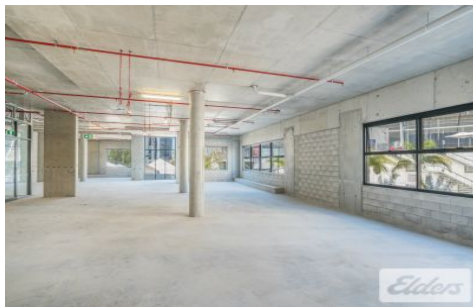




Commercial



18 - 24 Duke Street KANGAROO POINT QLD

3

ELDERS Commercial are proud to present to the market this prime Vulture Street corner strata opportunity. The property is being presented to the market for sale and is presented as a clean shell. This rare opportunity is located opposite the Gabba Stadium with easy access into the North Fringe, Eastern suburbs and Western corridor. Features include:

- Perfect for office or consulting.
- 345sqm first floor corner position
- 3 car park on title and ample visitor car parks.
- Located within walking distance of the Gabba busway and the soon to be completed Cross river rail
- Signage on the expansive glass windows.
- Pre-provision for air conditioning

Type : Offices
Building Size : 345 sqm
View : <https://www.elderscommercialbrisbane.net.au/4914166>



Ben Hackett
(07) 3252 4999



Robert Koster
(07) 3252 4999

[For full version visit the website](https://www.elderscommercialbrisbane.net.au)

<https://www.elderscommercialbrisbane.net.au>

(07) 3252 4999