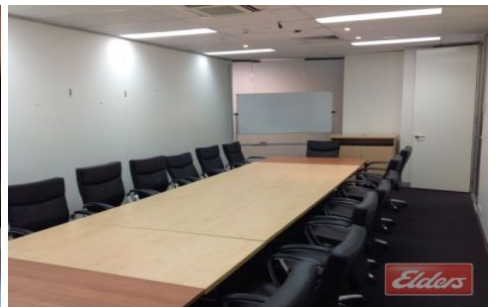
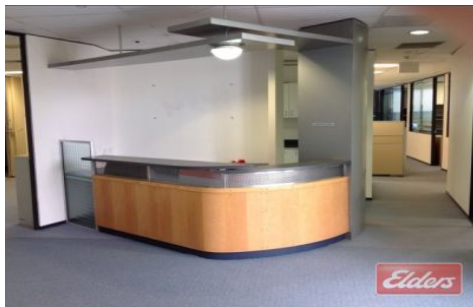
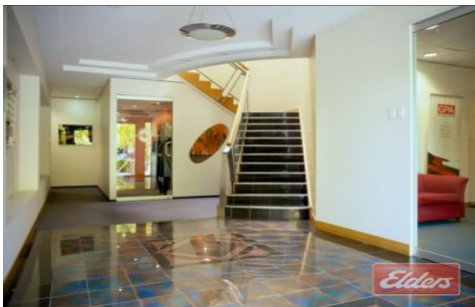




Commercial



9 Gardner Close MILTON QLD

2

- approx.338m2 High End Office
- Fully Fitted Out
- seconds from Public Transport
- Abundance of Natural Light

Type : Offices
Building Size : 338 sqm
View : <https://www.elderscommercialbrisbane.net.au/5185893>

This quality office is situated in the heart of Miltons corporate precinct and is fitted out with multiple offices, boardroom, work stations, storage, reception and open plan work area. The tenancy has windows all around it offering a great workspace for the business.

The space is ready to move in so get in now or miss out.

For further information or to arrange an inspection contact your ELDERS agent! The property is located in



Jordan George
 (07) 3252 4999



Clinton Mallan
 (07) 3252 4999

[For full version visit the website](https://www.elderscommercialbrisbane.net.au)