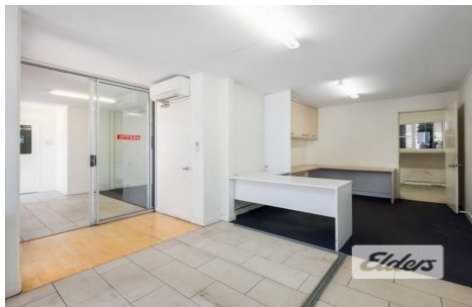




Commercial



4-6 Austin Street NEWSTEAD QLD

10 

Elders Commercial are pleased to present to the market for lease a highly versatile office/warehouse opportunity located off Breakfast Creek Road! The site is suitable to a multitude of users, offering 155sqm of office/showroom space over two levels, as well as 455sqm of high bay warehouse space with two container height roller doors. This tenancy benefits from being within walking distance of the Gasworks Precinct, multiple bus stops and Bowen Hills Train Station, whilst offering great onsite car parking!

Key features include:

- approx. 155sqm office/showroom over two levels
- approx. 455sqm high bay warehouse
- Two (2) container height roller doors
- Ten (10) on site exclusive car parks

Type : Industrial
Building Size : 610 sqm
View : <https://www.elderscommercialbrisbane.net.au/5212423>



Clinton Mallan
(07) 3252 4999



Luis Nicolaou
(07) 3252 4999

[For full version visit the website](https://www.elderscommercialbrisbane.net.au)

<https://www.elderscommercialbrisbane.net.au>

(07) 3252 4999