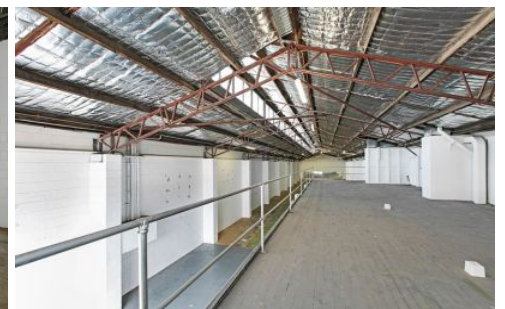
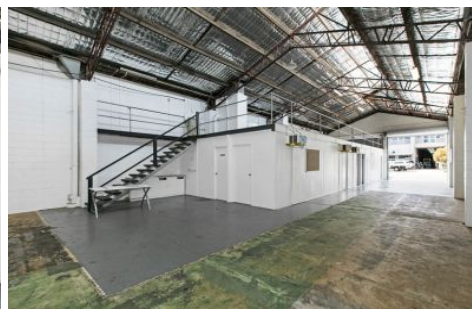




Commercial



21 Maud Street NEWSTEAD QLD

Elders Commercial Brisbane is pleased to present to the market for Lease this functional warehouse/showroom space in the heart of Newstead. Located just 2.5km* from the CBD, this freestanding warehouse offers outstanding connectivity to major arterial networks including Breakfast Creek Road & Kingsford Smith Drive.

Key features of the property include:

- Approx. 500m² open plan warehouse space
- Large mezzanine level with offices & kitchenette
- Shower room & bathrooms
- Excellent Exposure

For more information or to arrange an inspection, do not

[For full version visit the website](https://www.elderscommercialbrisbane.net.au)

Type : Industrial
Building Size : 500 sqm
View : <https://www.elderscommercialbrisbane.net.au/5334123>



Clinton Mallan
(07) 3252 4999



Will Kennedy
(07) 3252 4999

<https://www.elderscommercialbrisbane.net.au>

(07) 3252 4999