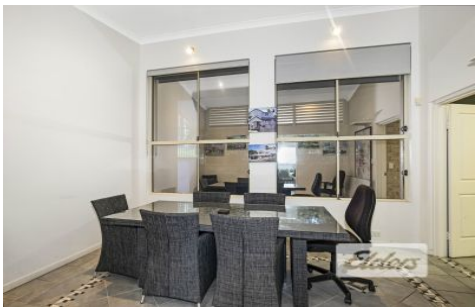




Commercial



598 Rode Road CHERMSIDE QLD

4

Elders Commercial Brisbane are pleased to present for lease 598 Rode Road, Chermshire! This highly versatile asset in this tightly held pocket features 69m² of NLA suited to office/retail/medical with prime exposure & signage opportunities to Rode Road. Additionally, this tenancy has great access to major arterial roads Webster Road and Gympie Road.

Type : Offices
Building Size : 69 sqm
View : <https://www.elderscommercialbrisbane.net.au/5737366>

Key features of this property include:

- 69m² Front dwelling
- Approximately five (5) car parks onsite
- Great exposure & signage potential fronting busy Rode Road
- Moments from Westfield Chermshire & The Price Charles



Clinton Mallan
(07) 3252 4999

[For full version visit the website](https://www.elderscommercialbrisbane.net.au)

<https://www.elderscommercialbrisbane.net.au>

(07) 3252 4999