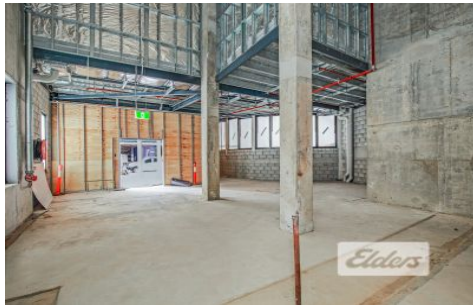




Commercial



31 Manning Street SOUTH BRISBANE QLD



Situated at the base of the iconic Skyneedle in the HALO residences is one of the newest editions to this ever growing precinct. The tenancy on offer is a perfect position to bank your business.

Type	: Retail
Building Size	: 135 sqm
View	: https://www.elderscommercialbrisbane.net.au/6325826

Key features of the property include;

- 135m2 of internal space + 158m2 external terrace
- Exposed ceilings and concrete flooring
- air-conditioned provisions in place
- Grease trap
- One (1) onsite car park with access to visitor car parks
- Substantial incentives on offer

For more information or to organise an inspection, please

[For full version visit the website](https://www.elderscommercialbrisbane.net.au)



Ben Hackett
(07) 3252 4999



Robert Koster
(07) 3252 4999