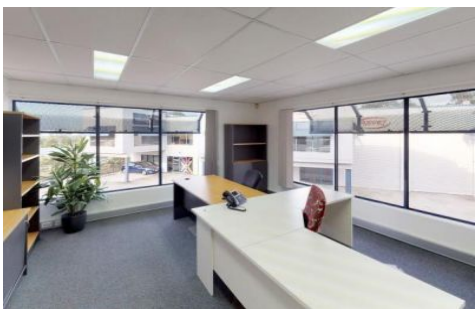




# Commercial



## 3/22 Palmer Place MURARRIE QLD

4

Elders Commercial Brisbane are pleased to present to market for lease this exciting opportunity to secure quality office located within one of Brisbane's most sought after industrial/commercial precincts. This modern office unit contains a high quality internal fitout and versatile layout options. The property also benefits from four (4) car parks alongside ultra-fast-fibre internet and is fitted with a container height roller door for ease of access.

**Type** : Offices  
**Building Size** : 190 sqm  
**View** : <https://www.elderscommercialbrisbane.net.au/6433977>

Further features of the property include:

- 190m2 office tenancy
- Outstanding position within complex
- Sought after/elevated site within Murarrie Business Park
- Modern fit out with electronic access, alarm, surveillance



**Clinton Mallan**  
**(07) 3252 4999**

[For full version visit the website](https://www.elderscommercialbrisbane.net.au)

<https://www.elderscommercialbrisbane.net.au>

(07) 3252 4999