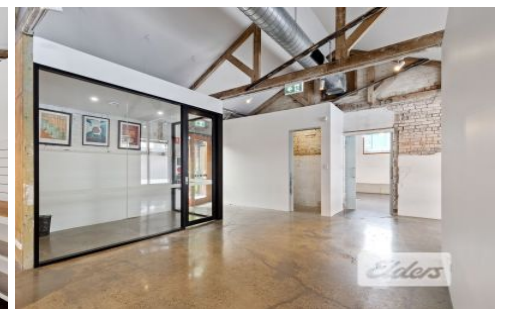




Commercial



12 Ipswich Road WOOLLOONGABBA QLD

2

Elders Commercial Brisbane are pleased to present to the market an exciting opportunity for lease in Woolloongabba! Spanning across 177m² of spacious open plan retail/office. this landmark heritage building has recently undergone significant refurbishments. Now boasting charming character features including original brickwork and archways, high ceilings, polished concrete floors and an abundance of natural light throughout, this property presents itself to a multitude of high end showroom users or office users!

Key features of the property include;

- 177m² ground floor space
- 2 staff car parks

[For full version visit the website](https://www.elderscommercialbrisbane.net.au)

Type : Retail
Building Size : 177 sqm
View : <https://www.elderscommercialbrisbane.net.au/6692867>



Ben Hackett
(07) 3252 4999



Robert Koster
(07) 3252 4999