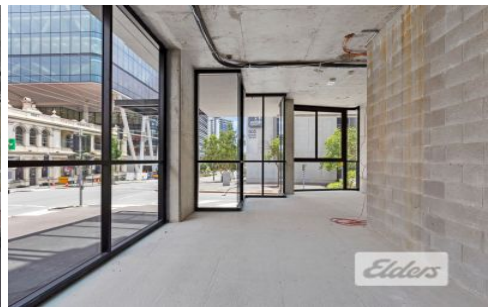




Commercial



Shop/465 St Pauls Terrace FORTITUDE VALLEY QLD

Elders Commercial Brisbane are pleased to present to the market for lease a 37m² tenancy within one of Brisbane's newest, contemporary residential developments. Benefitting from high ceilings, full glass shop front and exceptional dual street exposure to Constance Street and St Pauls Terrace, the property is suited to a variety of office/retail users seeking a modern, highly exposed opportunity. Access to generous street parking is granted and the site boasts immediate access to an abundance of retail/café amenity and key transport nodes!

Key features of the property include:

- 37m² ground floor tenancy
- Dual exposure to Constance St & St Pauls Terrace

[For full version visit the website](https://www.elderscommercialbrisbane.net.au)

Type : Retail
Building Size : 37 sqm
View : <https://www.elderscommercialbrisbane.net.au/6814712>



Luis Nicolaou
(07) 3252 4999