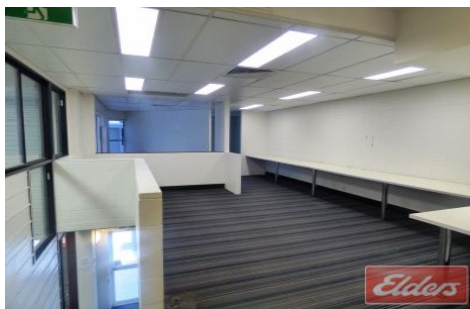
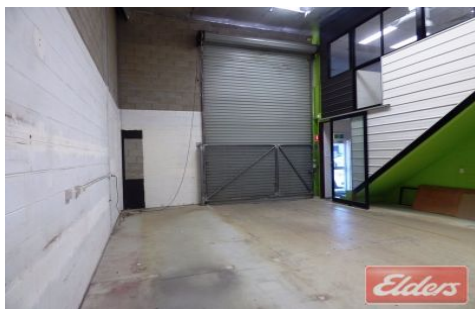




# Commercial



## 4/61 Holdsworth Street COORPAROO QLD

5 🚗

- 179sqm office/warehouse
- 119sqm office & 60sqm warehouse
- existing fit out, two partitioned offices and open plan area
- Container height roller door
- 4 - 5 car parks
- Walking distance to public transport

**Type** : Industrial  
**Building Size** : 179 sqm  
**View** : <https://www.elderscommercialbrisbane.net.au/6847961>

For more information contact your Elders Commercial agent today.



**Robert Koster**  
(07) 3252 4999



**Ben Hackett**  
(07) 3252 4999