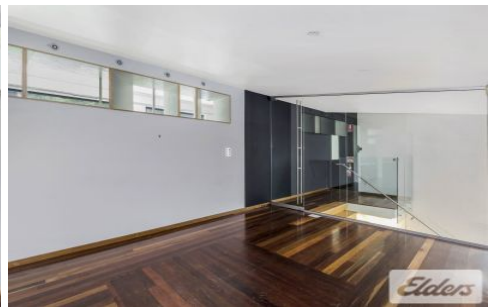
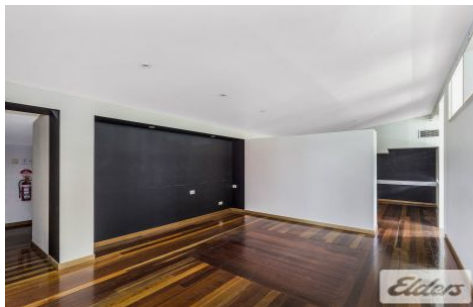




Commercial



119 Melbourne Street SOUTH BRISBANE QLD



Elders Commercial are pleased to present to the market for lease an exceptional open plan office at 119 Melbourne Street, South Brisbane. This refurbished loft style tenancy consists of an open plan work area with sweeping views over Melbourne Street, boardroom and common area with a modern kitchen and eating area set to the rear

Type : Offices
Building Size : 100 sqm
View : <https://www.elderscommercialbrisbane.net.au/7011721>

Key Features of the property include:

- 100m2 open plan office tenancy
- Metres from South Brisbane train station and Busway.
- Polished wood floors and glass panelling.
- Abundance of natural light.
- 1 car park
- Onsite shower.



Ben Hackett
(07) 3252 4999



Robert Koster
(07) 3252 4999

[For full version visit the website](https://www.elderscommercialbrisbane.net.au)

<https://www.elderscommercialbrisbane.net.au>

(07) 3252 4999