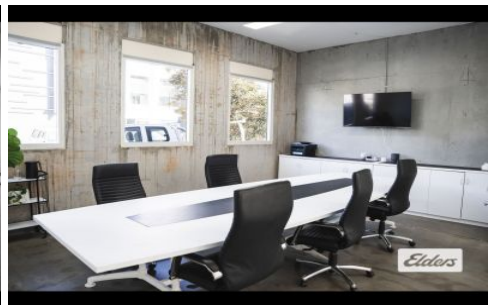
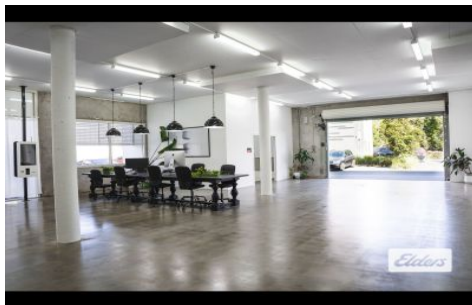
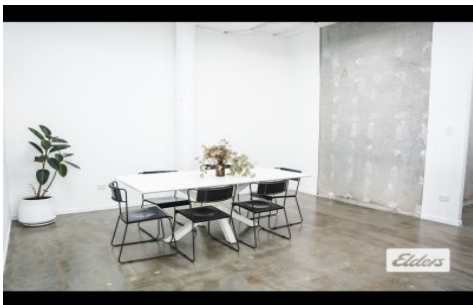
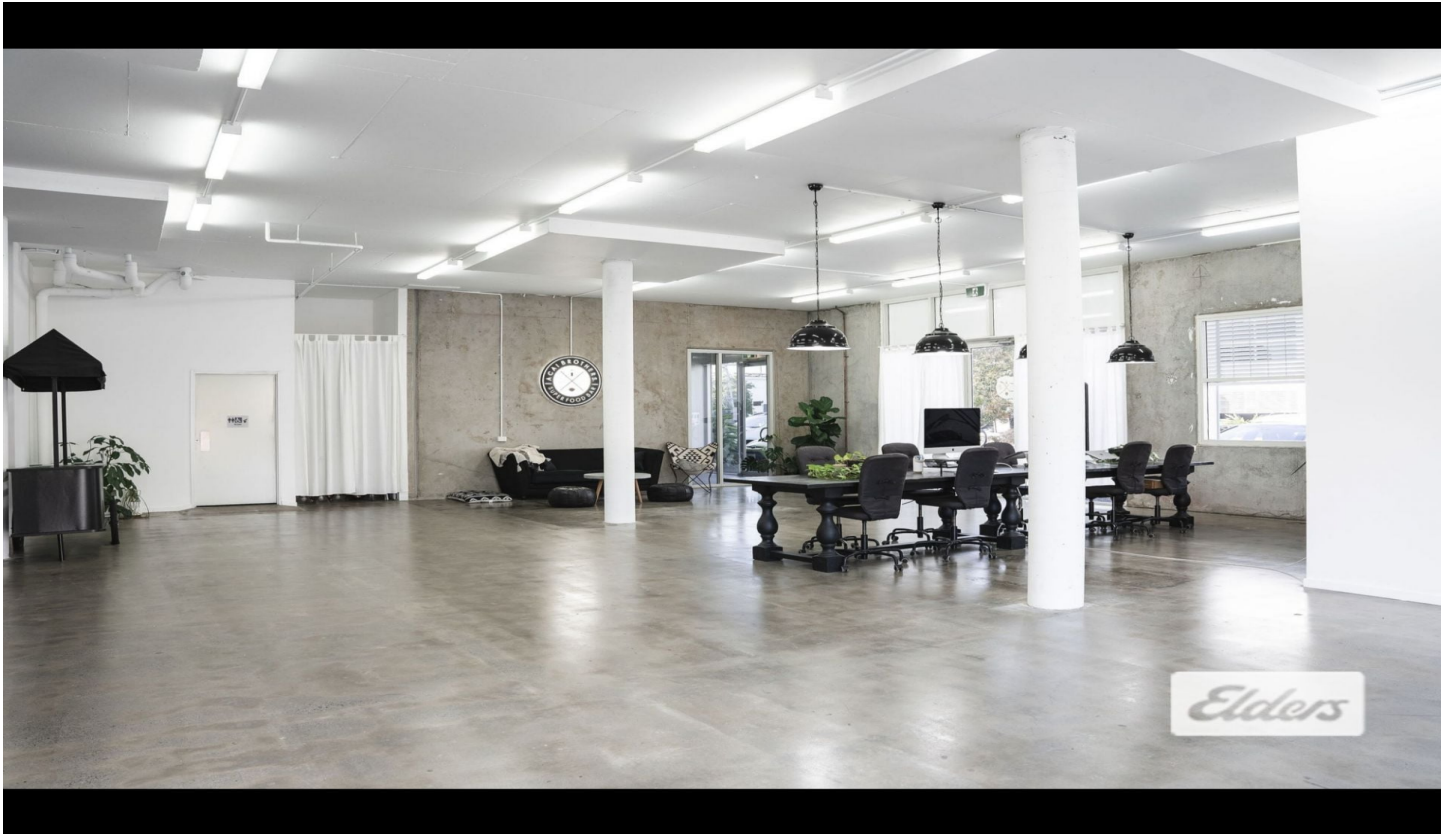




Commercial



Unit 8/23 Breene Place MORNINGSIDE QLD

10

Elders Commercial Brisbane are pleased to present to the market for lease an exciting opportunity within 23 Breene Place! This modern ground floor office tenancy offers excellent natural light, an abundance of parking and direct access to the Gateway Motorway, The Port of Brisbane & the Brisbane Airport.

Type : Offices
Building Size : 366 sqm
View : <https://www.elderscommercialbrisbane.net.au/7062027>

Other features of the tenancy include:

- 366m2 office tenancy
- 10 car spaces
- Sharp, high end fit out including reception, separate offices and open plan
- Polished concrete floors & high ceilings
- Exclusive use amenities



Ben Hackett
(07) 3252 4999



Robert Koster
(07) 3252 4999

[For full version visit the website](https://www.elderscommercialbrisbane.net.au)

<https://www.elderscommercialbrisbane.net.au>

(07) 3252 4999