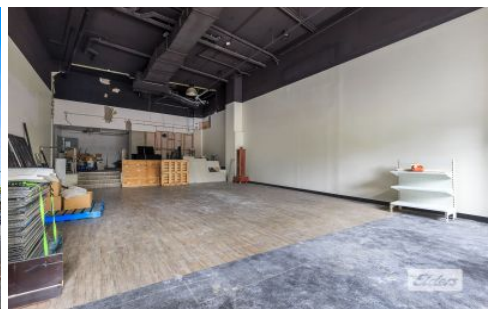




Commercial



6/15 Tribune Street SOUTH BRISBANE QLD

2

Elders Commercial Brisbane are pleased to present to the market for lease an exceptional retail opportunity at 15 Tribune Street, South Brisbane. The tenancy presents 140m² of open plan shop/retail, highly suited to a multitude of users. Well positioned just on the corner of Tribune and Grey Street the site also receives excellent exposure with South Brisbane's busy foot and vehicular traffic also benefitting from its tremendous night life and restaurants.

Type : Retail
Building Size : 140 sqm
View : <https://www.elderscommercialbrisbane.net.au/7082197>

Key features of the property include:

- 140m² adaptable shop/ retail
- Two (2) car spaces
- Well positioned corner site in South Brisbane
- Benefits from excellent foot and vehicular traffic



Ben Hackett
(07) 3252 4999



Robert Koster
(07) 3252 4999

[For full version visit the website](https://www.elderscommercialbrisbane.net.au)

<https://www.elderscommercialbrisbane.net.au>

(07) 3252 4999