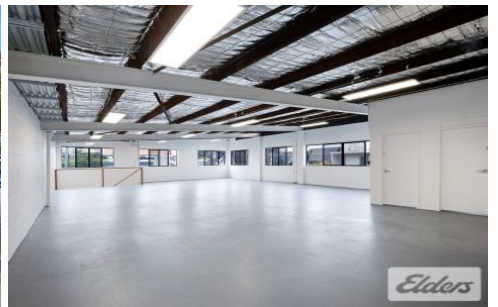
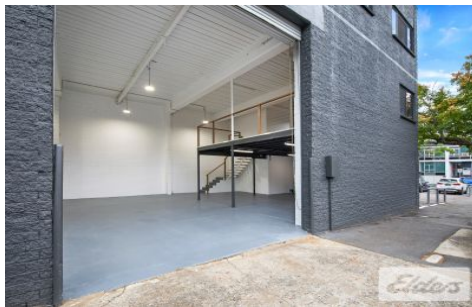




Commercial



95 Commercial Road NEWSTEAD QLD

2

Elders Commercial Brisbane are pleased to present to the market for lease 95 Commercial Road, Newstead.

Key features of the property include;

- 160-183m2 unique tenancies
- Two (2) onsite car parks
- Signage/exposure to Commercial Road
- Stones throw to Gasworks & Woolworths Metro
- Join one of Brisbane's most sought after precincts.

For more information or to arrange an inspection, contact your EXCLUSIVE Elders Commercial Agents today!

Type : Offices
Building Size : 183 sqm
View : <https://www.elderscommercialbrisbane.net.au/7128487>



Clinton Mallan
(07) 3252 4999



Will Kennedy
(07) 3252 4999