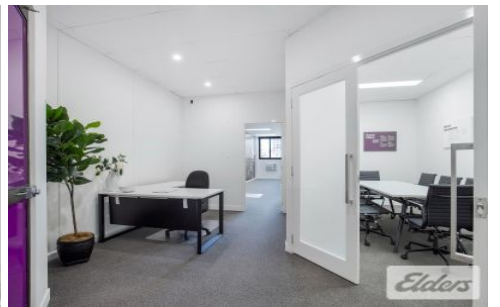




# Commercial



25/200 Moggill Road TARINGA QLD

40 🚗

Elders Commercial Brisbane are pleased to present to the market for lease this fitted office at 25/200 Moggill Road, Taringa. Presenting as 105m2 of functional office space, this tenancy consists of a boardroom, office, reception and open plan workstations for 10+ staff. Located along Moggill Road's bustling commercial strip, this property is surrounded by retail and food amenity and is conveniently positioned within walking distance of Taringa Train Station.

**Type** : Offices  
**Building Size** : 105 sqm  
**View** : <https://www.elderscommercialbrisbane.net.au/7169298>

Key features of the property include:

- 105m2 functional office
- Fully fitted for 10+ staff
- Executive office, reception & boardroom
- Excellent natural light throughout



**Slater Wright**  
(07) 3252 4999



**Michael Manis**  
(07) 3252 4999

[For full version visit the website](https://www.elderscommercialbrisbane.net.au)

<https://www.elderscommercialbrisbane.net.au>

(07) 3252 4999