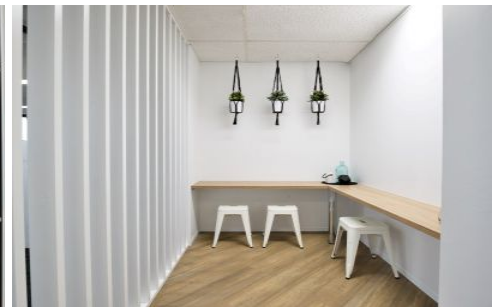
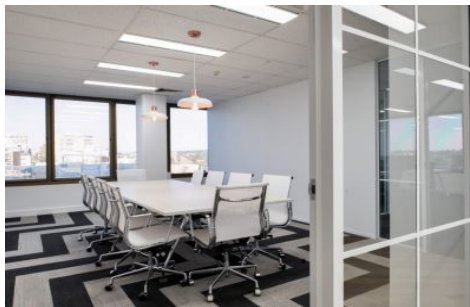




# Commercial



## Level 5 Suite 3/303 Coronation Drive MILTON QLD

3 🚗

Elders Commercial Brisbane are pleased to present to the market an exciting office suite in the heart of Milton! On offer is 174m<sup>2</sup> of fitted office space configured with predominately open plan work space, boardroom, two individual offices and kitchenette. This office tenancy is situated moments from the CBD and is close walking distance to Milton City Cat terminal and Milton Train Station.

**Type** : Offices  
**Building Size** : 174 sqm  
**View** : <https://www.elderscommercialbrisbane.net.au/7222416>

Key features of the property include:

- 174m<sup>2</sup> well configured office
- Natural light throughout
- Conveniently located in the Milton Business District
- Close proximity to rail, bus & ferry public transport



**Slater Wright**  
(07) 3252 4999



**Michael Manis**  
(07) 3252 4999

[For full version visit the website](https://www.elderscommercialbrisbane.net.au)

<https://www.elderscommercialbrisbane.net.au>

(07) 3252 4999