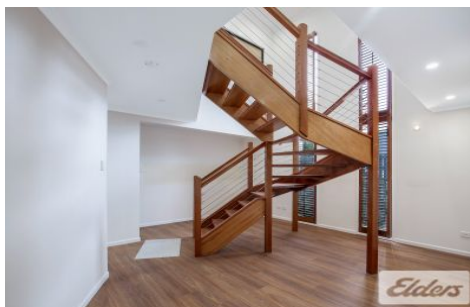




Commercial



196 Newmarket Road WILSTON QLD

2

Elders Commercial Brisbane are pleased to present to the market for lease an exciting office opportunity in the heart of Wilston. Situated behind "Divine Flowers?", The warm timber finishes and natural light create an inspiring place to work, with a number of private offices and a large open workspace / boardroom.

Key features of the property include:

- 168m² office tenancy*
- Two (2) car parks onsite
- Exclusive use patio & balcony
- Exclusive bathroom & kitchen amenity
- Meeting room, boardroom & open plan
- Walking distance to Café & Train Station

Type : Offices
Building Size : 168 sqm
View : <https://www.elderscommercialbrisbane.net.au/7231744>



Slater Wright
(07) 3252 4999



Luis Nicolaou
(07) 3252 4999

[For full version visit the website](https://www.elderscommercialbrisbane.net.au)

<https://www.elderscommercialbrisbane.net.au>

(07) 3252 4999