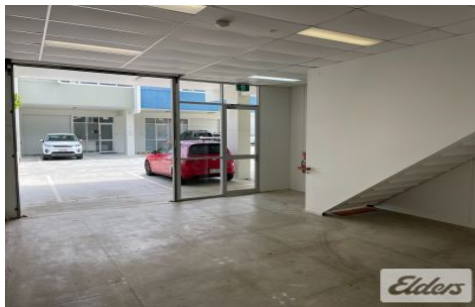




# Commercial



## 4/24 Finsbury Street NEWMARKET QLD

2

Elders Commercial Brisbane are pleased to present to the market for lease this functional office/warehouse opportunity in Newmarket at 4/24 Finsbury Street, Newmarket. Providing 61m<sup>2</sup> warehouse space accompanied by 65m<sup>2</sup> first floor office, this is a highly adaptable tenancy that can suit a wide variety of users.

**Type** : Industrial  
**Building Size** : 126 sqm  
**View** : <https://www.elderscommercialbrisbane.net.au/7248318>

Key features of the property include;

- 126m<sup>2</sup> adaptable office/warehouse
- 61m<sup>2</sup> warehouse + 65m<sup>2</sup> office
- Two (2) exclusive car parks + visitor
- Disabled bathroom and kitchenette
- Convenient location with easy access to Inner-City Bypass and CBD



**Michael Manis**  
(07) 3252 4999



**Slater Wright**  
(07) 3252 4999

[For full version visit the website](https://www.elderscommercialbrisbane.net.au)

<https://www.elderscommercialbrisbane.net.au>

(07) 3252 4999