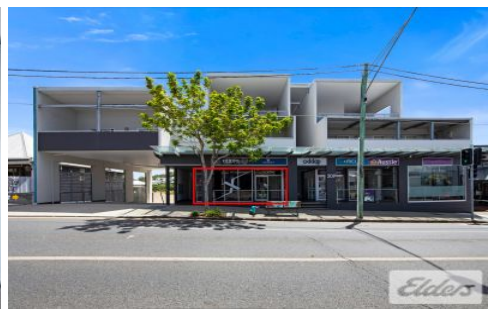
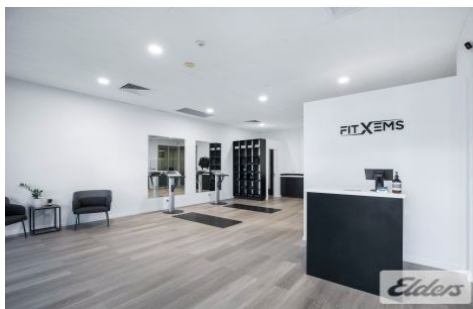




Commercial



211 Given Terrace PADDINGTON QLD

1

Elders Commercial Brisbane are pleased to present to the market for lease 211 Given Terrace, situated in the heart of Paddington. The tenancy is located within Paddington's highly sought after retail and dining precinct and features unrivalled exposure and signage potential. The property offers an abundance of natural light throughout, one (1) basement car park and is well suited to a number of business types.

Key features of the property include:

- Prime 60m2 office/retail tenancy
- One (1) basement car park
- Exceptional natural light throughout
- Great exposure & signage opportunity

Type : Offices
Building Size : 60 sqm
View : <https://www.elderscommercialbrisbane.net.au/7422008>



Slater Wright
(07) 3252 4999

[For full version visit the website](https://www.elderscommercialbrisbane.net.au)

<https://www.elderscommercialbrisbane.net.au>

(07) 3252 4999