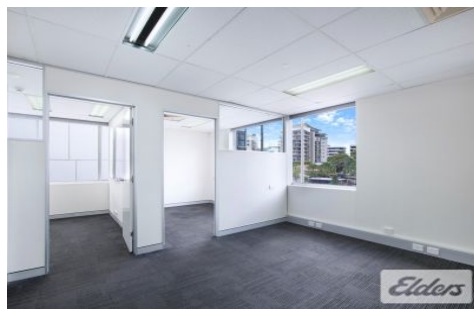
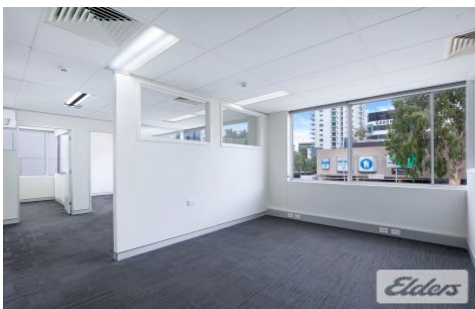




# Commercial



## 4 Park Road MILTON QLD

3

Elders Commercial Brisbane are pleased to present to the market for lease the exciting opportunity to secure a quality first floor office on Milton's iconic Park Road. This location provides Tenants with the ultimate convenience, just a stones throw to bus, rail & ferry services as well as a number of food, beverage and retail outlets.

**Type** : Offices  
**Building Size** : 170 sqm  
**View** : <https://www.elderscommercialbrisbane.net.au/7541096>

Key features of the property include:

- 170m2 functional first floor office
- Three (3) car parks at market rates
- Male & Female toilets + shower
- Open plan, multiple offices, meeting room & boardroom
- Immediate access to public transport nodes
- Unrivalled Park Road exposure & signage potential



**Slater Wright**  
(07) 3252 4999



**Luis Nicolaou**  
(07) 3252 4999

[For full version visit the website](https://www.elderscommercialbrisbane.net.au)

<https://www.elderscommercialbrisbane.net.au>

(07) 3252 4999