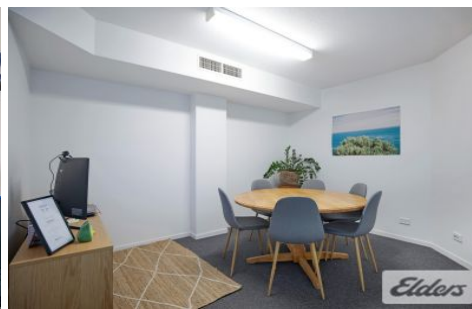




# Commercial



## 51 Douglas Street MILTON QLD

5 🚗

Elders Commercial Brisbane are pleased to present to the market for lease 60 - 317m<sup>2</sup> of office / showroom at 51 Douglas Street, Milton. Located within the heart of Milton the property benefits from great exposure and unrivalled signage opportunity conveniently located just moments from Park Road, the Train Station and the Brisbane CBD.

**Type** : Offices

**View** : <https://www.elderscommercialbrisbane.net.au/7544773>

Property features include;

- 60 - 317m<sup>2</sup> office/showroom over two (2) levels
- Up to five (5) onsite car parks
- Unrivalled exposure and signage
- Natural light throughout
- Walking distance to public transport nodes



**Harry Urbahn**  
(07) 3252 4999



**Will Kennedy**  
(07) 3252 4999

[For full version visit the website](https://www.elderscommercialbrisbane.net.au)

<https://www.elderscommercialbrisbane.net.au>

(07) 3252 4999