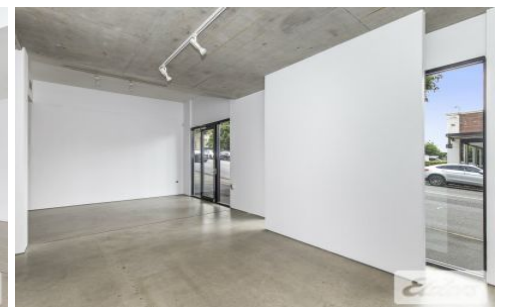
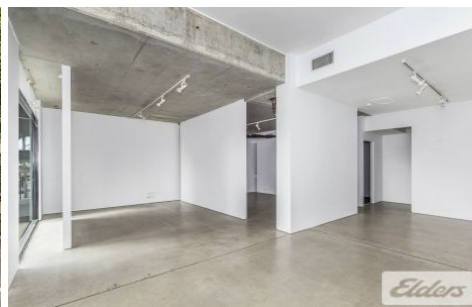




Commercial



555 Brunswick Street FORTITUDE VALLEY QLD



Elders Commercial Brisbane is pleased to present to the market for lease this ground floor opportunity on New Farms bustling Brunswick Street. Previously in use by an art gallery, the tenancy suits an array of business types including showroom, office or specialised retail.

Type : Retail
Building Size : 84 sqm
View : <https://www.elderscommercialbrisbane.net.au/7646516>

Key features of the property include;

- 84m² of modern open plan space
- Excellent natural light through glass shopfront
- Polished concrete floors & high ceilings
- Fantastic exposure onto Brunswick Street
- Kitchenette & bathroom facilities
- One (1) onsite car park included in rental
- Easily accessible via public transport directly opposite



Clinton Mallan
(07) 3252 4999



Luis Nicolaou
(07) 3252 4999

[For full version visit the website](https://www.elderscommercialbrisbane.net.au)

<https://www.elderscommercialbrisbane.net.au>

(07) 3252 4999