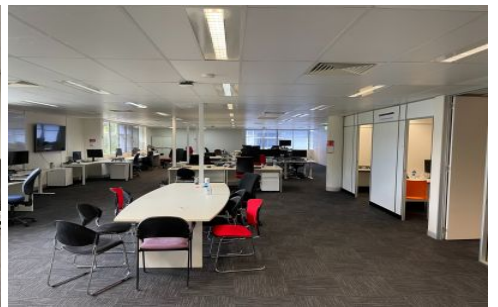
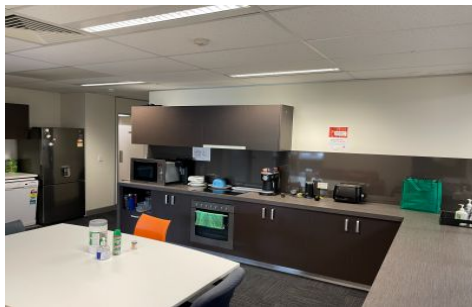
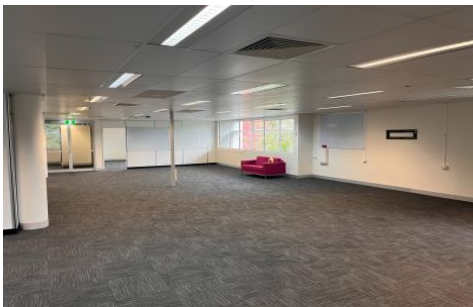




Commercial



Level 1 Unit 1/11 Black Street MILTON QLD

2

Elders Commercial Brisbane are pleased to present to the market for lease 300m² of spacious first floor office opportunity at 11 Black Street, Milton. Located on a prime corner of Castlemaine Street, this tenancy provides opportunities to a range of users looking for a base in Milton's commercial precinct.

Type : Offices
Building Size : 300 sqm
View : <https://www.elderscommercialbrisbane.net.au/7709528>

Key features of the property include:

- 300m² first floor office space
- Two (2) car parks
- High ceilings and natural light
- Open plan office with one boardroom and two meeting rooms
- Highly exposed corner positioning



Will Kennedy
(07) 3252 4999



Harry Urbahn
(07) 3252 4999

[For full version visit the website](https://www.elderscommercialbrisbane.net.au)

<https://www.elderscommercialbrisbane.net.au>

(07) 3252 4999