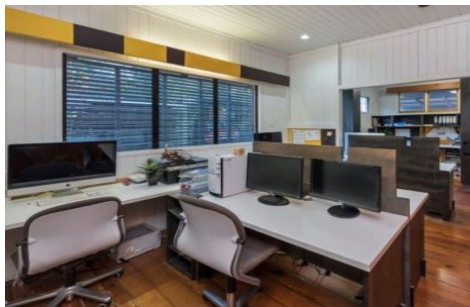
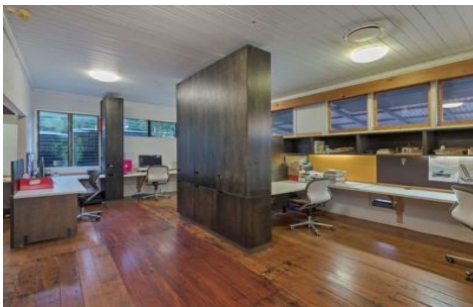




Commercial



61 Lugg Street BARDON QLD

Elders Commercial Brisbane are pleased to present to the market for lease a tidy office opportunity in Bardon at 61 Lugg Street. Situated stone's throw from Paddington's cafés and restaurants and Ashgrove central, this character cottage adapted to accommodate a thriving business and comprises seven workstations, an office, kitchen, boardroom/meeting room, and a bathroom.

Key features of the property include:

- 125m² character office
- Fit-out in place with seven (7) workstations
- Outdoor deck breakout space
- Polished timber floors and great natural light
- Walking distance to Paddington cafes and restaurants

Type : Offices
Building Size : 125 sqm
View : <https://www.elderscommercialbrisbane.net.au/7720796>



Slater Wright
(07) 3252 4999



Luis Nicolaou
(07) 3252 4999

[For full version visit the website](https://www.elderscommercialbrisbane.net.au)

<https://www.elderscommercialbrisbane.net.au>

(07) 3252 4999