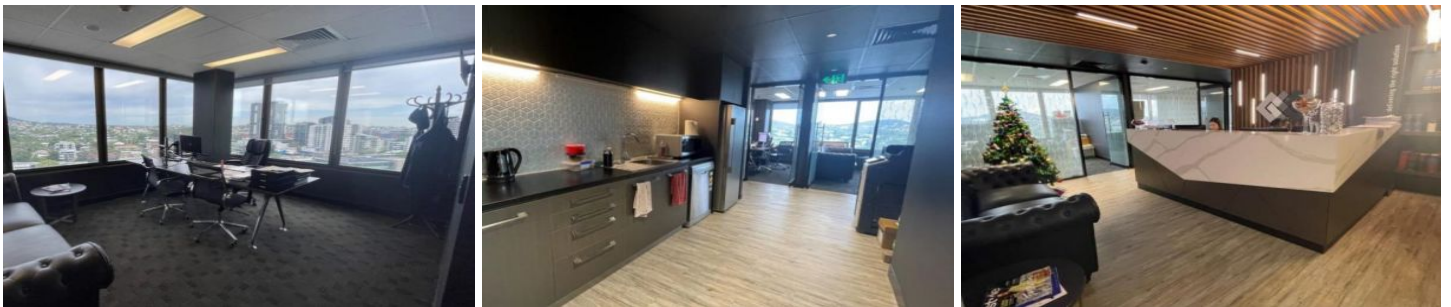




Commercial



Level 6 Suite 1/303 Coronation Drive MILTON QLD

Elders Commercial Brisbane are pleased to present to the market for lease a range of fully fitted office tenancies in the heart of Milton! Located along Coronation Drive the property offers 91m²-139m² of professional office accommodation with private office, boardroom, reception area and kitchenette.

Key features of the property include;

- 91m² - 139m² functional office
- Executive offices an a generous boardroom
- Conveniently located in the Milton Business District
- Secure carparking and EOT facilities available
- Close proximity to rail, bus & ferry public transport
- Stones throw to the Brisbane CBD

Type : Offices
Building Size : 139 sqm
View : <https://www.elderscommercialbrisbane.net.au/7723978>



Harry Urbahn
(07) 3252 4999



Will Kennedy
(07) 3252 4999

[For full version visit the website](https://www.elderscommercialbrisbane.net.au)