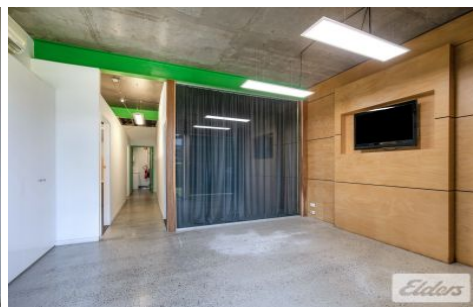




Commercial



1/35 Manilla Street EAST BRISBANE QLD

3

Situated in a complex of 3 Strata units, the property enjoys features such as polished concrete floors, exposed beams and great functional fit-out, some further features include:

- 160m2 of high end office space over 2 levels.
- 3 on site car parks included.
- small roller door accessible storage area.
- Creative fit-out in place.
- Full Kitchen area.
- There are 2 breweries and multiple cafes within a stones throw.

This is a great central base for any business, for more information or to arrange an inspection contact the EXCLUSIVE ELDERS agents! Located in East

Type : Offices
Building Size : 160 sqm
View : <https://www.elderscommercialbrisbane.net.au/7735796>



Robert Koster
(07) 3252 4999



Ben Hackett
(07) 3252 4999

[For full version visit the website](https://www.elderscommercialbrisbane.net.au)

<https://www.elderscommercialbrisbane.net.au>

(07) 3252 4999