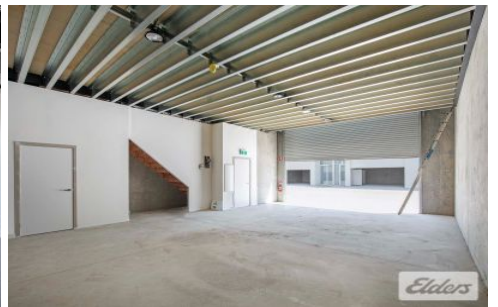
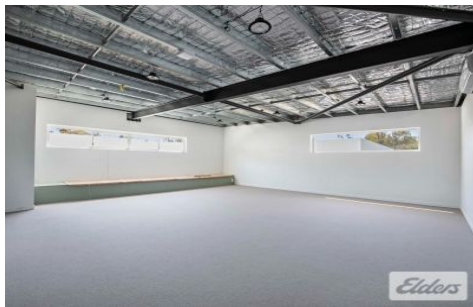




# Commercial



## 13/19-25 Gould Lane HERSTON QLD

2 🚗

Elders Commercial Brisbane are pleased to bring to the market for lease a brand new boutique style office / warehouse suited to range of users. Unit 13/19-25 Gould Lane boasts 190m<sup>2</sup> across two levels with a large ground floor warehouse/storage space and mezzanine level perfect for an open plan office.

**Type** : Industrial  
**Building Size** : 190 sqm  
**View** : <https://www.elderscommercialbrisbane.net.au/7747615>

Key features include:

- 190m<sup>2</sup> office/warehouse
- 92m<sup>2</sup> ground floor, 98m<sup>2</sup> mezzanine
- Three (3) car parks & shared loading zone
- Great natural light & AC throughout
- Ideally located just moments to major arterial roads



**Luis Nicolaou**  
(07) 3252 4999



**Clinton Mallan**  
(07) 3252 4999

[For full version visit the website](https://www.elderscommercialbrisbane.net.au)

<https://www.elderscommercialbrisbane.net.au>

(07) 3252 4999