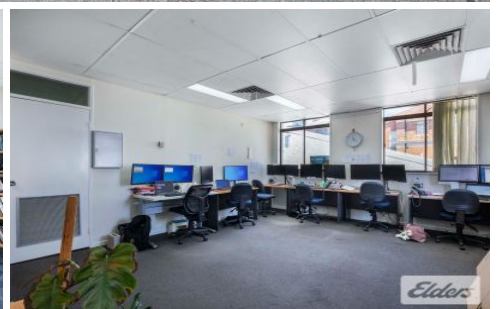
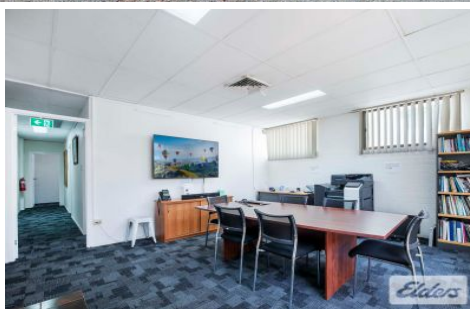
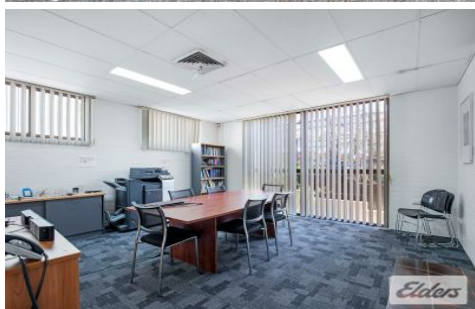




Commercial



170 Boundary Street WEST END QLD

7 🚗

A fantastic opportunity has just come up on Boundary Street. ELDERS Commercial are proud to present for lease this well presented first floor tenancy in 170 Boundary Street, located in the heart of the West End business precinct, the tenancy provides excellent value in this vibrant hub.

Type : Offices

View : <https://www.elderscommercialbrisbane.net.au/7748704>

Further features include;

- 220m2 First floor office that will be newly refurbished before entry.
- 4 + Exclusive under cover car parks included in the rental figure.
- Consists of offices, boardroom and open plan area's
- The tenancy is extremely well priced for a quick result.



Robert Koster
(07) 3252 4999



Charlie Greentree
07 3252 4999

[For full version visit the website](https://www.elderscommercialbrisbane.net.au)

<https://www.elderscommercialbrisbane.net.au>

(07) 3252 4999