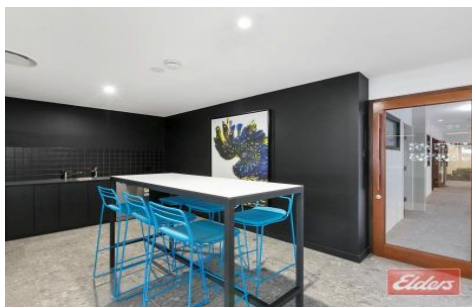




# Commercial



61 Ipswich Road WOOLLOONGABBA QLD

8 🚗

Elders Commercial Brisbane are pleased to present to the market for lease a well refurbished modern office space on Ipswich Road. Located on the first floor of 61 Ipswich Road, this opportunity features 253m<sup>2</sup> with four offices and a private kitchenette.

**Type** : Offices  
**Building Size** : 253 sqm  
**Land Size** : 1591 sqm  
**View** : <https://www.elderscommercialbrisbane.net.au/7818330>

Further features include;

- \* 253m<sup>2</sup> consisting of four offices.
- \* 8 dedicated car parks and ample customer car parks.
- \* An abundance of natural light.
- \* High end finishing's and fixtures.
- \* Substantial breakout/lunch room.
- \* Male, female & disabled toilet with an onsite shower.
- \* Fully fitted kitchen.

[For full version visit the website](https://www.elderscommercialbrisbane.net.au)



**Charlie Greentree**  
07 3252 4999



**Robert Koster**  
(07) 3252 4999

<https://www.elderscommercialbrisbane.net.au>

(07) 3252 4999