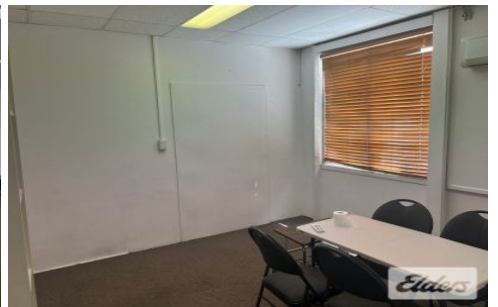
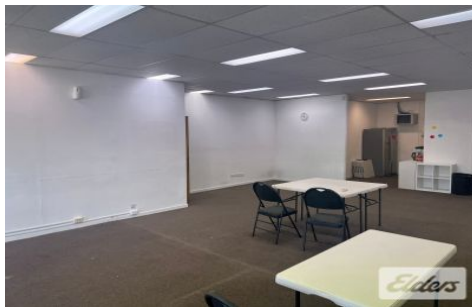




Commercial



Level 1 & 2/329 Logan Road Greenslopes QLD

2

On offer are 2 x 155m² floor plates located on the 1st and 2nd levels of this well exposed commercial building, the lessor ideally wants to lease the site as a whole.

Further features include;

- 310m² of mainly open plan area over 2 levels.
- Kitchen and toilets on each level.
- Easy walk to train and bus station as well as heaps of visitor parking at bus depot.
- 2 Car Parks included
- An unbelievable rate of \$177.42 per/m² gross.

For more information or to arrange an inspection, contact the ELDERS Commercial agents. The tenancy

Type : Offices
Building Size : 310 sqm
View : <https://www.elderscommercialbrisbane.net.au/7887906>



Ben Hackett
(07) 3252 4999



Charlie Greentree
07 3252 4999

[For full version visit the website](https://www.elderscommercialbrisbane.net.au)

<https://www.elderscommercialbrisbane.net.au>

(07) 3252 4999