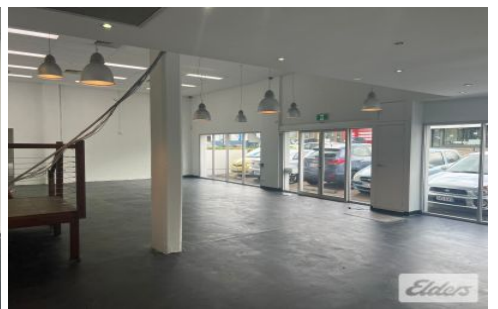
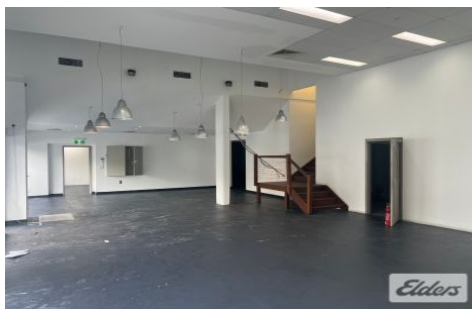




Commercial



36 Balaclava Street WOOLLOONGABBA QLD



Elders Commercial Brisbane are pleased to present to the market for lease a prime two level converted office to retail/showroom along Balaclava Street in Woolloongabba's highly sought after suburb. The tenancy is located just off Ipswich Road catching all the exposure as a main thoroughfare to Logan and Ipswich Road.

Key features include:

- Circa 650m2 retail/showroom/office
- 447m2 ground floor showroom
- 200m2 first floor office
- Strong on-site parking
- Excellent signage & exposure opportunities

Type : Showrooms/Bulky Goods
Building Size : 650 sqm
View : <https://www.elderscommercialbrisbane.net.au/7911092>



Charlie Greentree
07 3252 4999



Ben Hackett
(07) 3252 4999

[For full version visit the website](https://www.elderscommercialbrisbane.net.au)

<https://www.elderscommercialbrisbane.net.au>

(07) 3252 4999