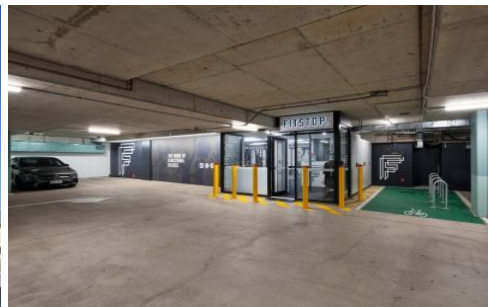




# Commercial



## 530 Milton Road TOOWONG QLD

Elders Commercial Brisbane are pleased to present to the market for lease a range of high-quality office and retail leasing opportunities within an established and highly sought-after commercial precinct. Offering 39m<sup>2</sup>-105m<sup>2</sup> versatile retail/office, the tenancies are suitable for a wide range of operators. Positioned on the busy intersection of Milton Road and Croydon Street, the property benefits from excellent exposure and outstanding signage opportunities.

Key features include:

- 39m<sup>2</sup>-105m<sup>2</sup> office/retail/medical
- Newly refurbished tenancies and building
- Excellent exposure and signage potential
- Generous onsite car parking

[For full version visit the website](https://www.elderscommercialbrisbane.net.au)

**Type** : Retail

**View** : <https://www.elderscommercialbrisbane.net.au/7982746>



**Will Kennedy**  
(07) 3252 4999



**Harry Urbahn**  
(07) 3252 4999