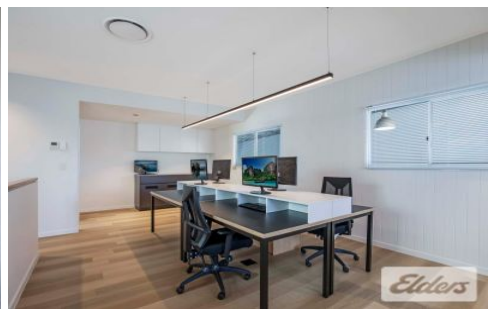
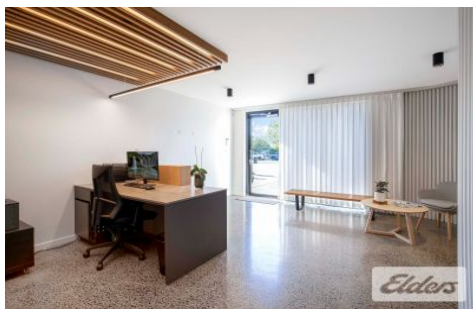




Commercial



1/72 Riverside Place MORNINGSIDe QLD

4 🚗

Elders Commercial are pleased to present to the market for lease unit 1/72 Riverside Terrace, Morningside. This well presented strata unit has just undergone a major refurbishment, no expense was spared to create what is close to an A grade office fitout with container height roller door access, further features include:

- 138m2 Of Ground Floor office/reception and high bay warehouse WITH 3 PHASE.
- 45m of Mezzanine, office and boardroom
- 4 Exclusive car parks
- Polished concrete flooring on both levels.
- Large secure hardstand pad to the side and rear of the site.
- Well presented Toilet Amenities on Both Ground and

Type : Industrial
Building Size : 183 sqm
View : <https://www.elderscommercialbrisbane.net.au/8017844>



Robert Koster
(07) 3252 4999



Ben Hackett
(07) 3252 4999

[For full version visit the website](https://www.elderscommercialbrisbane.net.au)

<https://www.elderscommercialbrisbane.net.au>

(07) 3252 4999