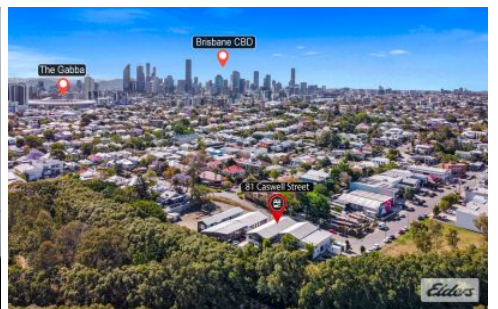
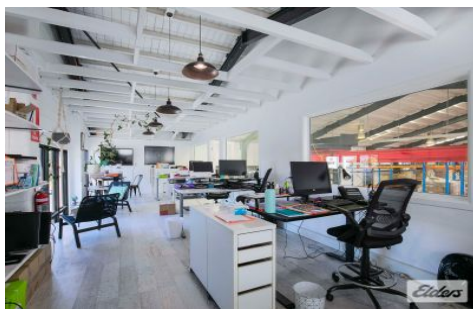
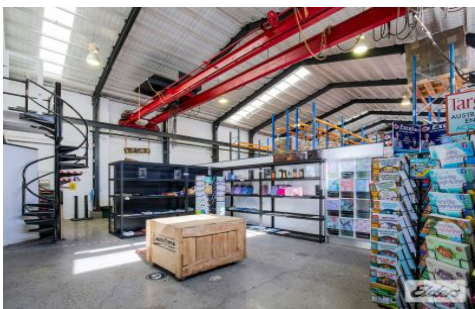




Commercial



81 Caswell Street EAST BRISBANE QLD

12

Elders Commercial Brisbane are pleased to present to the market for Lease this funky office / warehouse. Provides original character features with a modern twist, with opportunity to split across two tenancies.

Type : Industrial

View : <https://www.elderscommercialbrisbane.net.au/8035194>

Just off Stanley Street East, key features of the property include:

- 640m2 of lettable area
- opportunity to split into 400m2 & a 240m2
- Low impact industry zoning
- 6 metre high ceilings
- 12 car park spaces onsite with additional substantial unmetered on street parking
- Male/female amenities



Ben Hackett
(07) 3252 4999



Charlie Greentree
07 3252 4999

[For full version visit the website](https://www.elderscommercialbrisbane.net.au)

<https://www.elderscommercialbrisbane.net.au>

(07) 3252 4999