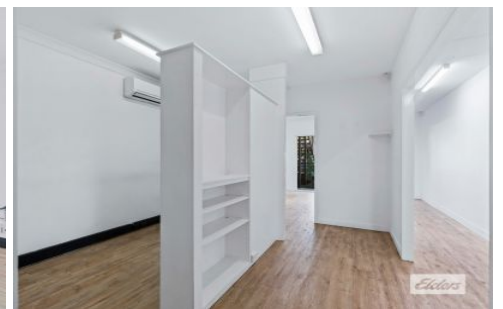




Commercial



67 Boundary Street WEST END QLD

2

Elders Commercial Brisbane are pleased to present to the market for lease an outstanding ground floor opportunity located at 67 Boundary Street, West End, positioned in the heart of West End's busy retail hub.

Type : Offices
Building Size : 68 sqm
View : <https://www.elderscommercialbrisbane.net.au/8072324>

Key features include;

- 68m2 Ground floor retail/office offering
- Two (2) exclusive car parks
- Disabled access + amenities
- Flexible terms
- Excellent signage & exposure opportunities
- Outstanding surrounding retail amenity

For more information or to arrange a private inspection,



Ben Hackett
(07) 3252 4999



Robert Koster
(07) 3252 4999

[For full version visit the website](https://www.elderscommercialbrisbane.net.au)

<https://www.elderscommercialbrisbane.net.au>

(07) 3252 4999