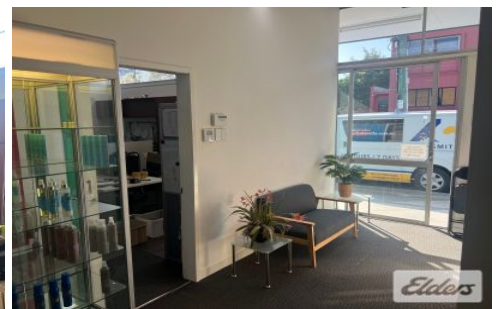
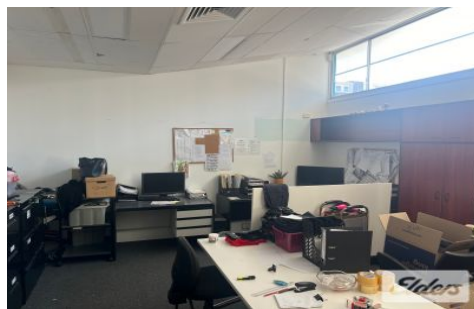
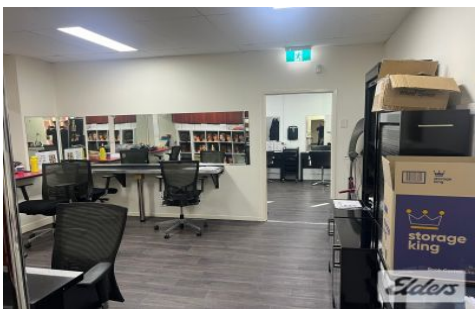




Commercial



28-38 Old Cleveland Road STONES CORNER QLD

2

Elders Commercial Brisbane are pleased to present to the market for lease an excellent ground floor retail/office opportunity with disabled access & amenities.

The owner has planned a significant refurbishment upon the current tenants vacating.

Key features include:

- 56m2 ground floor office/retail
- Glass frontage
- Disabled access + amenity
- One (1) exclusive car parks on-site
- Loading zone at the entry
- Convenience to the Stones Corner busway

Type : Offices
Building Size : 150 sqm
View : <https://www.elderscommercialbrisbane.net.au/8080204>



Charlie Greentree
07 3252 4999



Ben Hackett
(07) 3252 4999

[For full version visit the website](https://www.elderscommercialbrisbane.net.au)

<https://www.elderscommercialbrisbane.net.au>

(07) 3252 4999