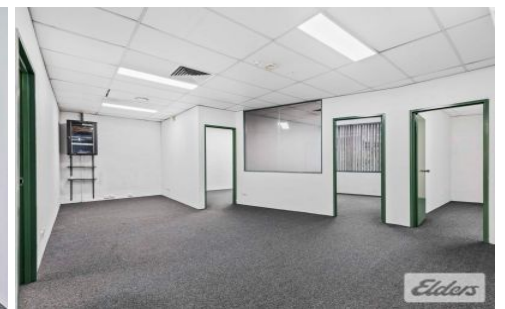




# Commercial



**5/29 McDougall Street MILTON QLD**

**3**

Elders Commercial Brisbane are pleased to present to the market for lease this fitted office in the heart of Milton. Positioned only a stones throw to Park Road, the property is suited to an array of office users.

Key features of the property include;

- 126m<sup>2</sup> level one office
- Reception area, boardroom, three (3) offices & open plan
- Excellent natural light throughout & with exclusive use balcony
- Conveniently located only metres from Park Rd & Railway Tce dining precincts
- Three (3) exclusive use car parks, plus onsite visitor

**Type** : Offices  
**Building Size** : 126 sqm  
**View** : <https://www.elderscommercialbrisbane.net.au/8099231>



**Clinton Mallan**  
(07) 3252 4999



**Will Kennedy**  
(07) 3252 4999

[For full version visit the website](https://www.elderscommercialbrisbane.net.au)

<https://www.elderscommercialbrisbane.net.au>

(07) 3252 4999