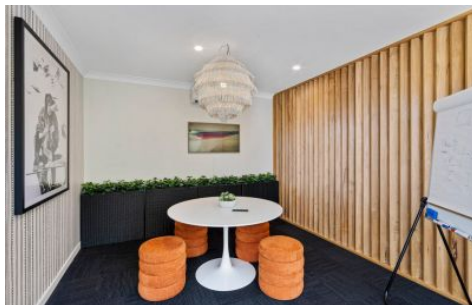




Commercial



Ground/1/55 Clarence Street COORPAROO QLD



For lease is this ultra tidy 41m2 Coorparoo office, consisting of predominantly open plan space, this tenancy provides a professional entry level office opportunity within easy access of the CBD.

Further features include:

- Outstanding existing fit-out.
- Ample onsite and on street parking.
- Stones throw from Coorparoo train station.
- A close walk from a selection of cafes.

For more information or to arrange an inspection, contact the EXCLUSIVE ELDERS agents.

Type : Offices
Building Size : 41 sqm
View : <https://www.elderscommercialbrisbane.net.au/8178419>



Robert Koster
(07) 3252 4999



Ben Hackett
(07) 3252 4999