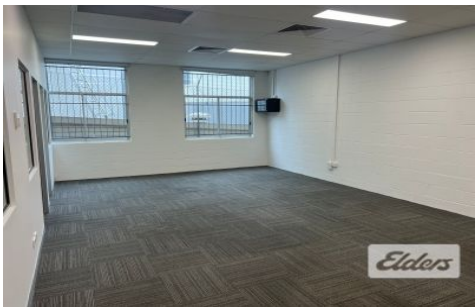




# Commercial



**2/50 Logan Road WOOLLOONGABBA QLD**



If you're on the hunt for a quality Ground floor office then don't stop reading! A stones throw from the Woolloongabba Retail precinct, this ground level tenancy is within close proximity to the Woolloongabba Busway and Cross River Rail Train Station.

**Type** : Offices  
**Building Size** : 148 sqm  
**View** : <https://www.elderscommercialbrisbane.net.au/8315123>

Key Features of the Property Include:

- 148sqm offices
- Exclusive use car spaces
- Open Plan areas, private offices and boardrooms
- Walking distance from Woolloongabba's restaurant precinct

For further information or to arrange an inspection, don't hesitate to contact the Elders Commercial Agents today!

[For full version visit the website](https://www.elderscommercialbrisbane.net.au)



**Ben Hackett**  
**(07) 3252 4999**



**Charlie Greentree**  
**07 3252 4999**