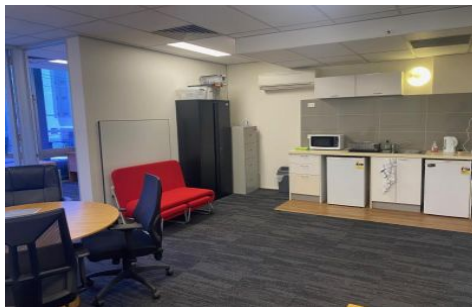




Commercial



Suite 13/17 Bowen Bridge Road BOWEN HILLS QLD

Elders Commercial Brisbane are pleased to present to the market for lease 13/17 Bowen Bridge Road, Bowen Hills. Offering 50m² functional office within the heart of Bowen Hills, the property offers excellent exposure with signage potential.

Key features include:

- 50m² fully fitted office in a quality corporate building
- 2 Secure basement car parks
- Onsite amenities including lift access
- Directly opposite RNA Showgrounds, and Royal Brisbane Hospital
- High exposure with signage potential
- Close proximity to major roads and ease of access to transport nodes

Type : Offices
Building Size : 50 sqm
View : <https://www.elderscommercialbrisbane.net.au/8318249>



Will Kennedy
(07) 3252 4999



Harry Urbahn
(07) 3252 4999

[For full version visit the website](https://www.elderscommercialbrisbane.net.au)

<https://www.elderscommercialbrisbane.net.au>

(07) 3252 4999