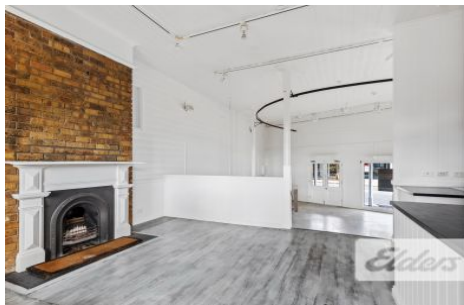




Commercial



9 Latrobe Terrace PADDINGTON QLD

3 🚗

Elders Commercial Brisbane are pleased to present to the market for lease one of Paddington's landmark character buildings on the prominent Latrobe Terrace strip. The available tenancy enjoys the prime corner position with large open plan floor areas, private balconies and a large commercial style kitchen.

Key features include;

- 86m2-270m2 prime office / retail / showroom
- Corner positioning with excellent exposure
- Abundance of pedestrian / vehicle traffic
- Strong character features throughout
- Join a strong mix of surrounding tenants
- Walking distance to a range of retail & dining amenity

Type : Retail
Building Size : 184 sqm
View : <https://www.elderscommercialbrisbane.net.au/8333238>



Will Kennedy
(07) 3252 4999



Harry Urbahn
(07) 3252 4999

[For full version visit the website](https://www.elderscommercialbrisbane.net.au)

<https://www.elderscommercialbrisbane.net.au>

(07) 3252 4999