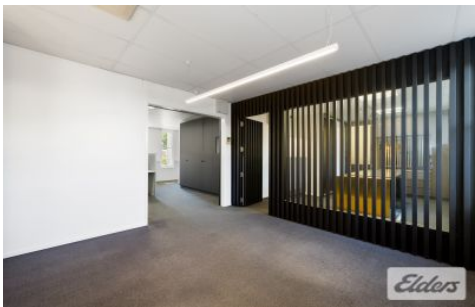




# Commercial



## 1 Potts Street EAST BRISBANE QLD



Elders Commercial Brisbane are pleased to present to the market for lease, 1 Potts Street, East Brisbane. Showcasing an 100m2 character ground floor office suite in the heart of East Brisbane, this tenancy has a mixture of open-plan workspace and partitioned offices, perfect for an inviting and professional environment.

**Type** : Offices  
**Building Size** : 100 sqm  
**View** : <https://www.elderscommercialbrisbane.net.au/8448305>

### Key Features Include;

- 100m2 refurbished office suite
- Four (4) exclusive car parks
- High-exposure corner location just off Stanley Street
- Disabled access and convenient amenities
- Abundant natural light throughout
- Private kitchenette and staff breakout area



**Charlie Greentree**  
07 3252 4999



**Ben Hackett**  
(07) 3252 4999

[For full version visit the website](https://www.elderscommercialbrisbane.net.au)

<https://www.elderscommercialbrisbane.net.au>

(07) 3252 4999